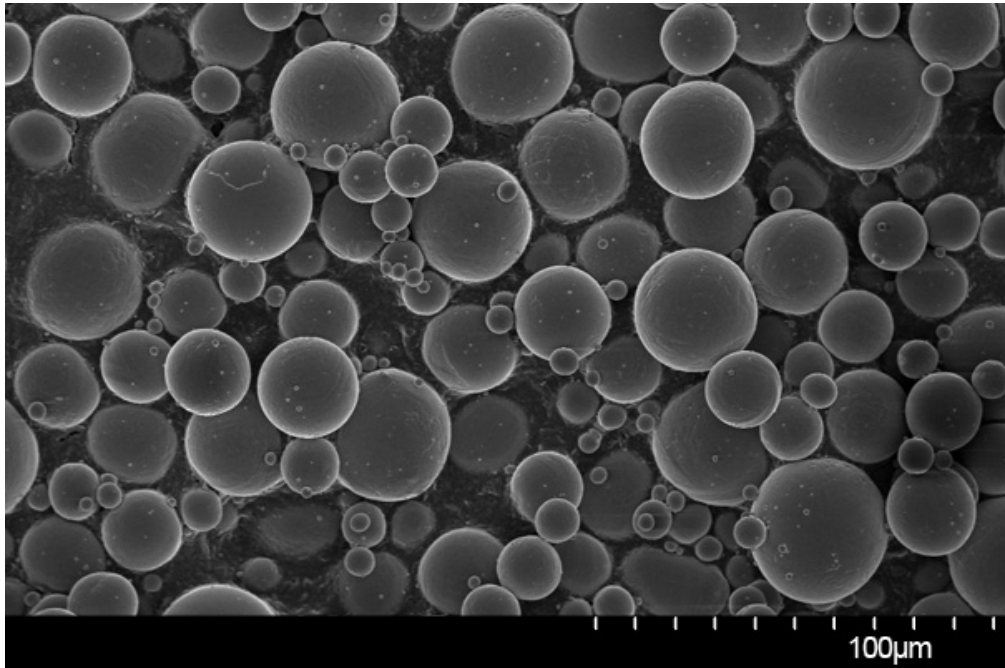
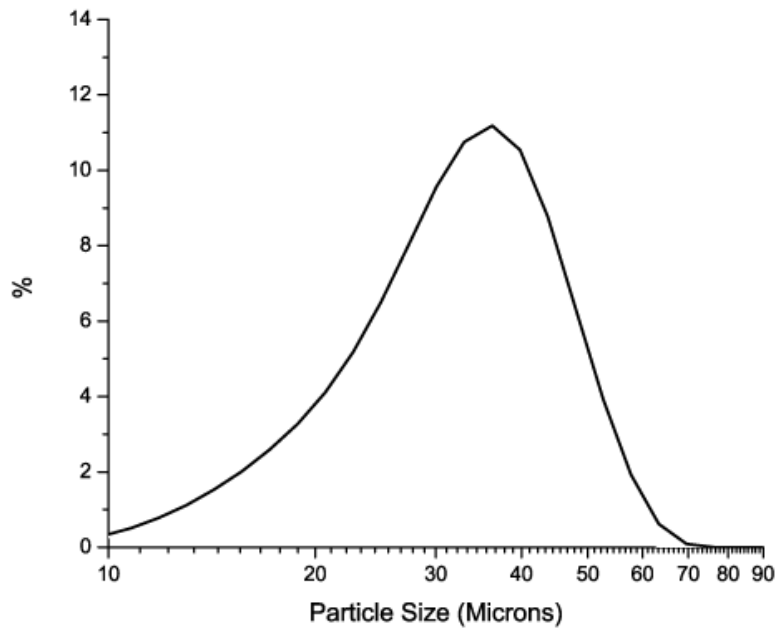


Cp-Ti (15-45 μm)

SEM



Particle Size Distribution



Size Distribution by Laser diffraction (ASTM B822-10)	
D10	21.4 μm
D50	34.4 μm
D90	46.0 μm

Flowability

Test	Time	Testing method
Hall Flowmeter	– 28 s	ASTM B213-11
Carney Flowmeter	– 10 s	ASTM B964-09

Chemical Composition

Element	AP&C typical Gr.1 (% wt.)	Testing method
Carbon	0.02	ASTM E1941
Oxygen	0.08-0.15	ASTM E1409
Nitrogen	0.02	ASTM E1409
Hydrogen	0.010	ASTM E1447
Iron	0.05-0.20	ASTM E2371
Other max. each	0.1	ASTM E2371
Other max. total	0.4	ASTM E2371
Titanium	Balance	ASTM E2371

AP&C powders chemistry may comply with standards: ASTM B348, ASTM F67, ASTM F1580 and ASTM B863.

Densities

Test	Density	Testing method
Apparent density	2.50 g/cm ³	ASTM B212-12
Tap density	2.79 g/cm ³	ASTM B527-06